

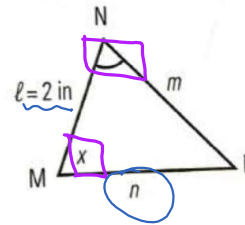
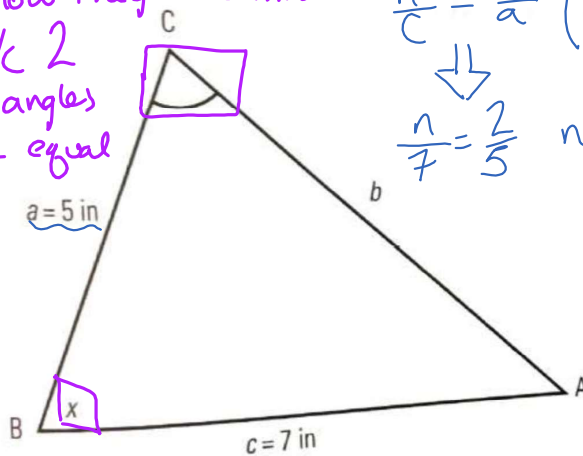
Example 1:

Given the two triangles below, find the length of n .

* know they're similar
b/c 2
cor. angles
are equal

$$\frac{n}{c} = \frac{\ell}{a} \left(\frac{c}{n} = \frac{a}{\ell} \right)$$

$$\frac{n}{7} = \frac{2}{5} \quad n = 2.8$$

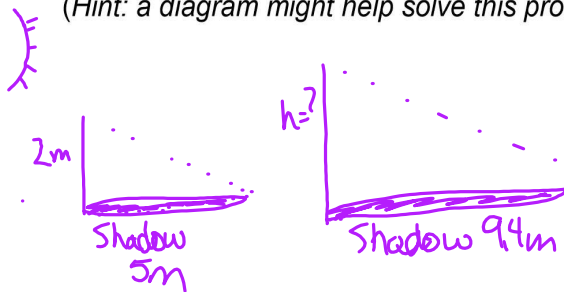


**Complete Build Your Skills #1-3 on pages 278- 279.

Example 2:

Ravi notices that a 2-m pole casts a shadow of 5 m, and a second pole casts a shadow of 9.4 m. How tall is the second pole?

(Hint: a diagram might help solve this problem)



$$\frac{h = 3.76m}{2m} = \frac{9.4m}{5m}$$

The second pole is 3.76m.

**Complete Build Your Skills #4-6 on page 281.

**Complete Practise Your New Skills #1-4 on pages 282-283.

Review

| | |
|-------------------------------|-----------------------------------------------|
| 6.1 – Similar Polygons | 6.2 – Determining if Two Polygons are Similar |
| 6.3– Drawing Similar Polygons | 6.4 – Similar Triangles |

**Complete the Chapter Test on pages 284-287