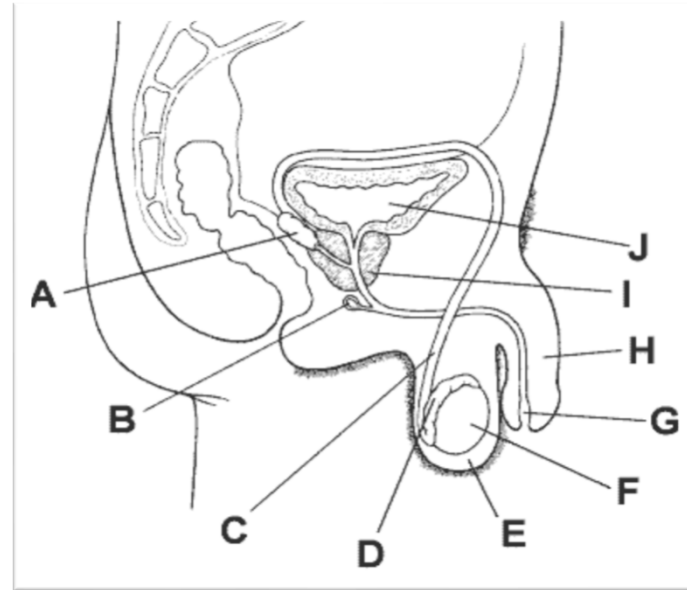
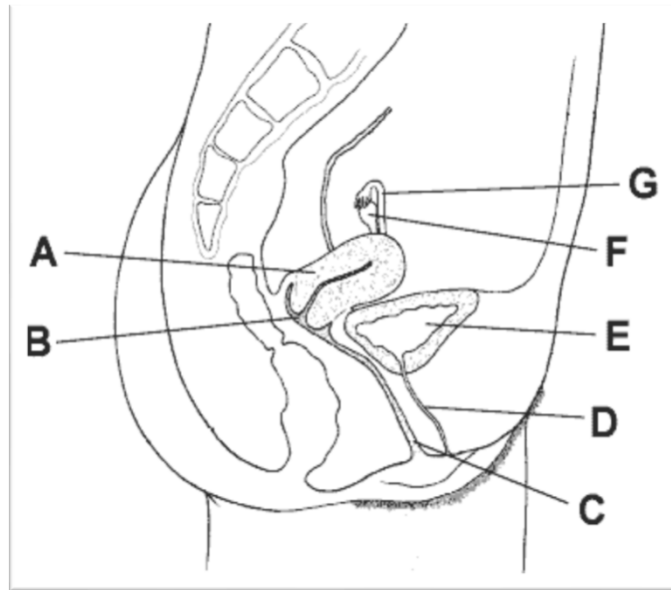


Human Reproduction

Male and Female Systems



OUTCOME QUESTION(S):

S1-1-09:

What parts make up the male and female sex systems and what is the function of each part?

Vocabulary & Concepts

Hormone

Testosterone

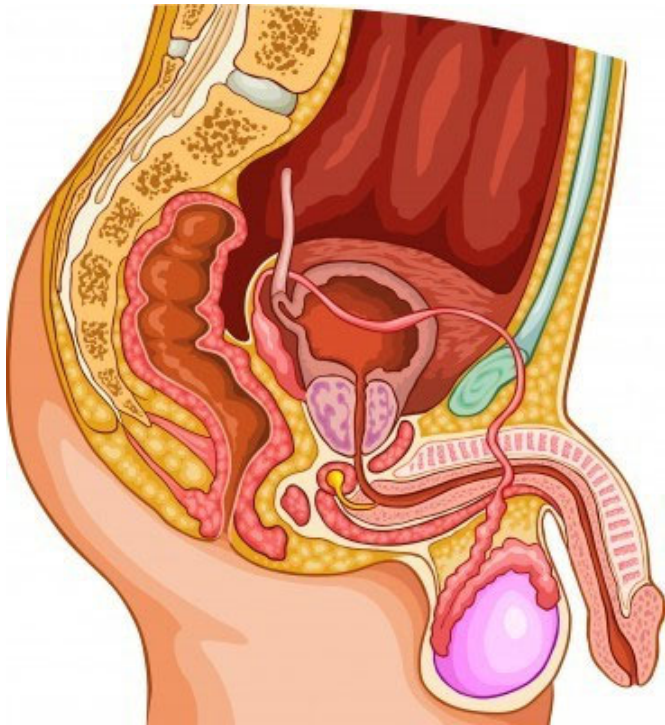
Estrogen

Progesterone

You need to know all the male and female components that make up the “system”

Male reproductive system *must both*:

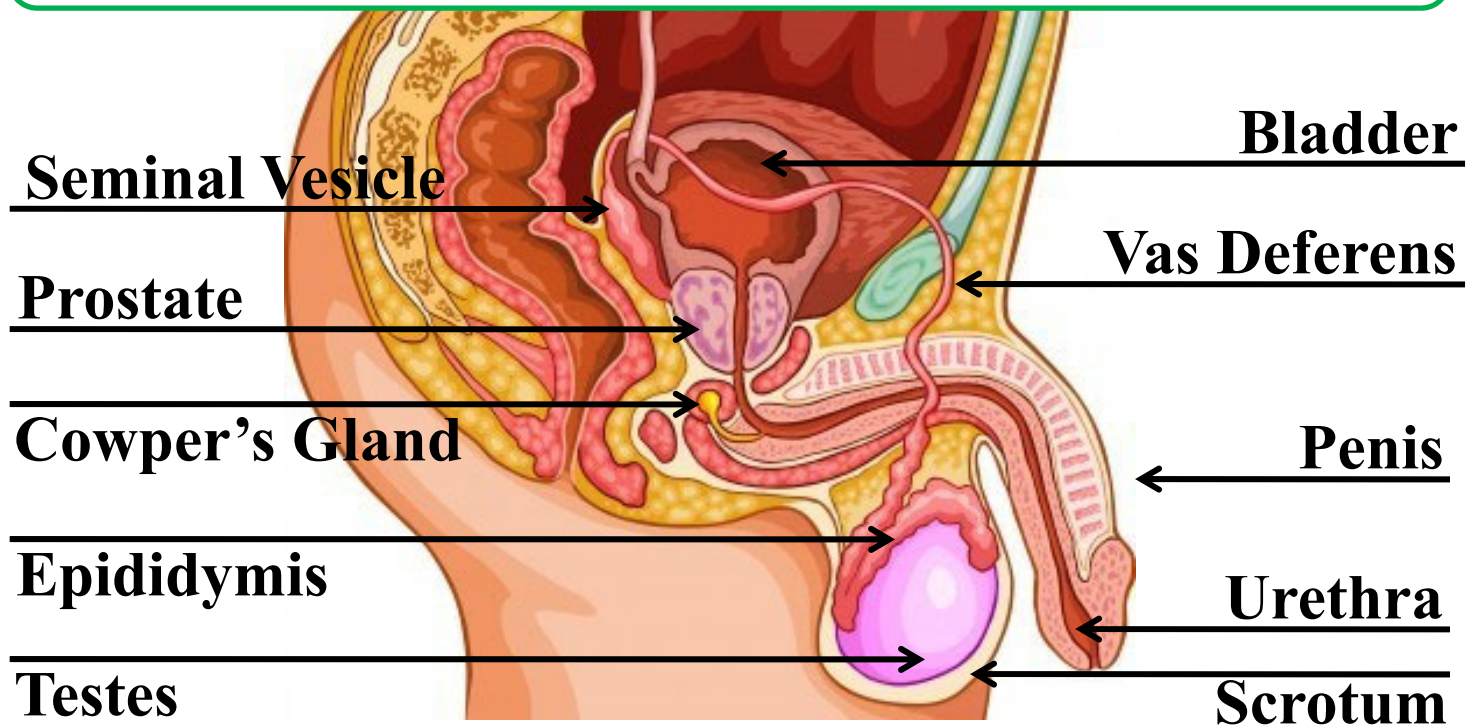
- Produce sperm → male gamete
- Pass sperm on to female – sexual intercourse



The male symbol represents the “shield and spear” of **Mars** – the roman god of war

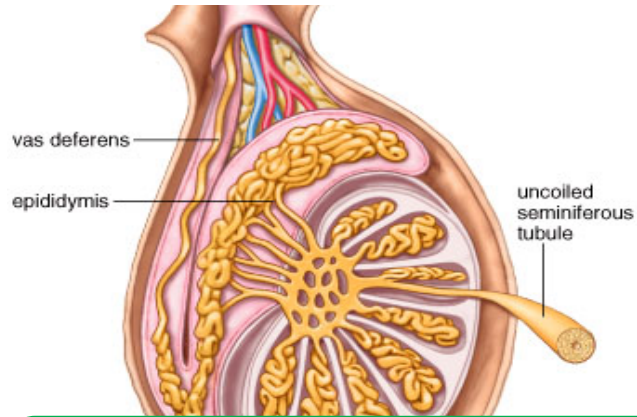
Male sex organs:

Don't try to memorize this picture – *you will see different pictures* – learn how everything connects and where it is

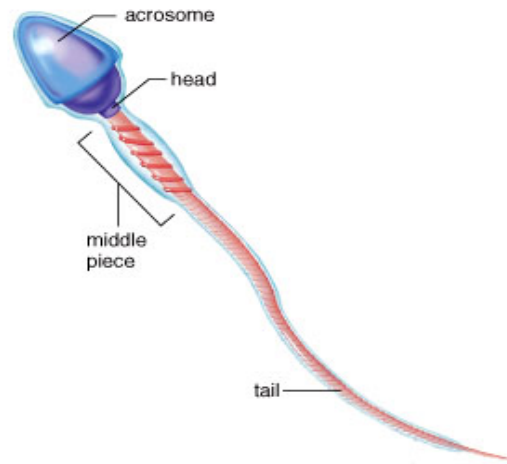


<u>Component</u>	<u>Function</u>
Scrotum	<ul style="list-style-type: none"> • Holds the testes externally (outside) <i>(providing a cooler environment for healthy sperm)</i>
Testes	<ul style="list-style-type: none"> • Site of sperm production - <i>seminiferous tubules</i> <i>(1000 sperm a heart beat)</i>
Epididymis	<ul style="list-style-type: none"> • Sperm storage place until ejaculation
Vas deferens	<ul style="list-style-type: none"> • Transports sperm <i>from epididymis to the urethra</i>
Urethra	<ul style="list-style-type: none"> • Transports sperm and urine <i>through the penis</i> <i>(joins the vas deferens under the prostate gland)</i>
Prostate gland / Seminal vesicle / Cowper's gland	<ul style="list-style-type: none"> • 3 glands together make semen <i>(contains nutrients and sugars for the sperm's "journey")</i>
Penis	<ul style="list-style-type: none"> • Delivers sperms and excretes urine

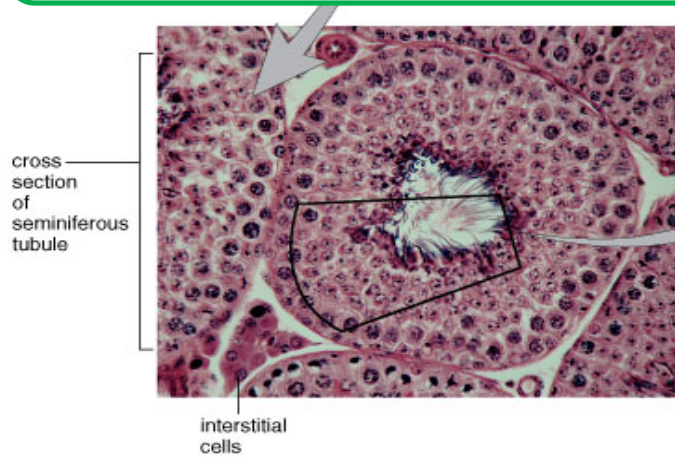
Male gamete:



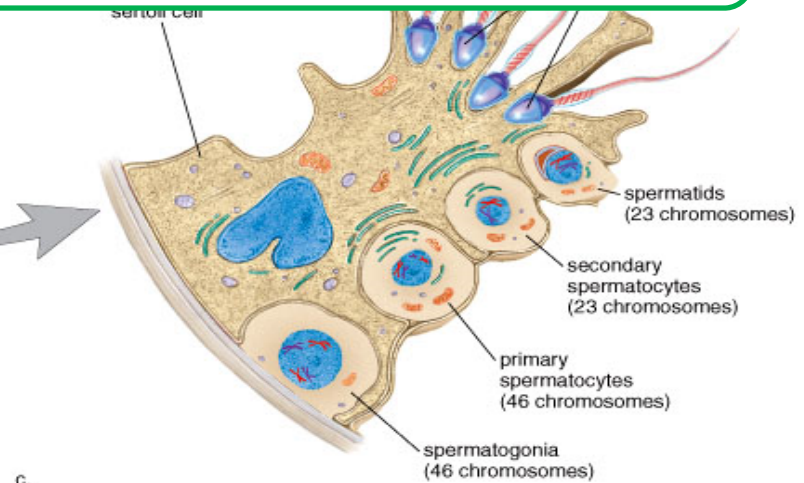
ies, Inc. Permission required for reproduction or display.



Sex organs (and sperm production) remain non-functioning until kick-started by **hormones** during puberty



b.



c.

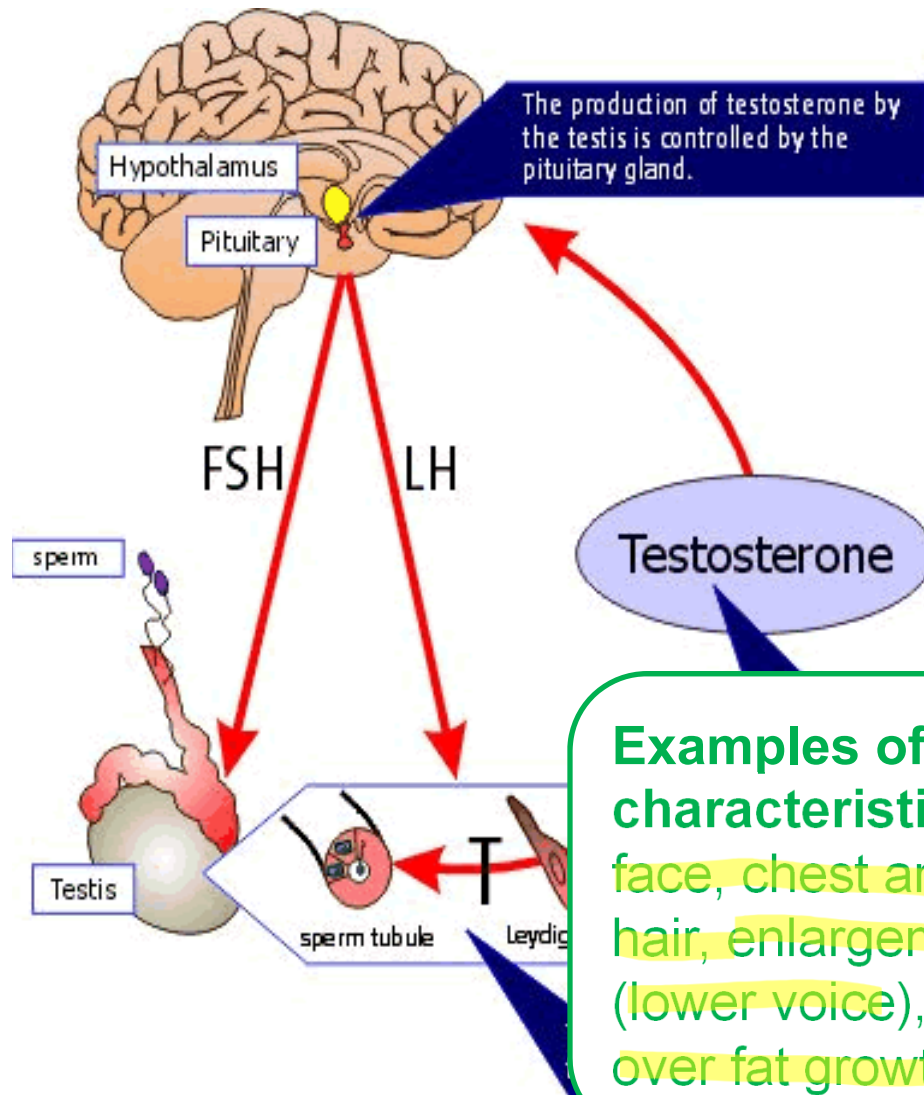
Hormone: chemical “messenger” that allows one body part to influence the behavior of another.

Hormones are released by “**glands**” – this system is called the ***Endocrine system***

Puberty and the Brain:

Pituitary gland in the *brain* releases **2** hormones *simultaneously* that instruct body to grow/mature:

- stimulates testes to produce *males sex hormone* **testosterone** which starts *production of sperm*



Testosterone is responsible for all male “secondary sex characteristics”

Examples of male secondary sex characteristics include: hair growth on face, chest and under armpits, pubic hair, enlargement of the Adam’s Apple (lower voice), increased muscle growth over fat growth.